

# EUROPEAN TRAIL ORIENTEERING CHAMPIONSHIPS

25–29 MAY 2022

ESPOO, FINLAND



## BULLETIN 4

May 2022



# Table of Contents

Greeting from the Patron of ETOC 2022 .....	4
Organising Team.....	5
Event Advisers .....	6
Event Programme .....	7
Event Centre and Accommodation .....	9
Participation .....	10
Classes and Competition rules .....	10
Entries .....	11
Team Officials' Meetings.....	11
Event Office.....	12
Embargoed areas.....	12
Mapping.....	15
One-ways .....	15
Course information .....	16
Model, Wednesday 25 May 2022 .....	17
PreO 1, Thursday 26 May 2022 .....	19
PreO 2, Friday 27 May 2022 .....	21
TempO, Saturday 28 May 2022 .....	23
Relay, Sunday 29 May 2022 .....	26
Punching system and results .....	29
Start number bibs .....	29
Procedure at timed controls and in Tempo .....	29
Equipment .....	30
Solution maps .....	31
Complaints and Protests .....	31
Climate .....	32
Travel and transport .....	32



Catering.....	32
Photos and videos.....	32
Public events .....	33
Ceremonies .....	34



## Greeting from the Patron of ETOC 2022

Dear friends of orienteering,

I am very grateful and honoured to be the Patron of the European Trail Orienteering Championships! I am also genuinely happy that the competition can finally take place after some difficult years with the pandemic.

Sport and exercise have a big impact, both on the individual and society, and they are also an important part of my own everyday life. Exercise should be about well-being, it should be social and fun. Children and young people in particular should be encouraged to move, and it is up to us adults to ensure that there is a diverse range of different options to choose from. The impact of sport and exercise cannot be stressed enough.

Orienteering as a sport contributes to the society, but it also has a big impact on the individual. It is a sport that teaches us to respect and protect nature, which is crucial in times like these when we experience a climate crisis. During your visit to Finland and during the competition, you will get to enjoy our beautiful Finnish nature. Orienteering strengthens both the body and the mind, which is important for the individual. Successes strengthen self-esteem while mistakes, such as getting lost in the forest, force us to deal with disappointments – which is an important life skill too, even though it might not feel like it in that moment.

I want to give a special thank you to the organizers, who are making all of this happen, despite the challenges caused by the pandemic. I wish all the participants the best of luck and I hope all of you will experience a wonderful competition in our beautiful Finnish nature.



Thomas Blomqvist  
Minister for Nordic Cooperation and Equality



## Organising Team

<b>Event Director</b>	Anna Jacobson
<b>Deputy Event Director</b>	Petri Tötterman
<b>Competition Managers</b>	Model: Tero Korento PreO 1 & 2: Jan Biström, Anders Westerlund TempO: Anders Weckström Relay: Harry Sainio
<b>Course Planners</b>	Model: All course planners PreO 1: Martti Inkinen PreO 2 & Relay: Åke Jacobson TempO: Roope Näsi
<b>Map-making</b>	Matti Toivonen
<b>Technical Coordination</b>	Åke Jacobson
<b>Event Administration</b>	Henrika Backman
<b>Results Manager</b>	Jouni Junkkaala
<b>IT and equipment</b>	Kai Risku, Tero Korento
<b>Tempo station team leader</b>	Olli Kantanen
<b>Recruiting Officer</b>	Henna Salminen, Mari Seppänen
<b>Course preparation</b>	Daniel Backman
<b>Finance Officer</b>	Henrik Wallén
<b>Accommodation</b>	Hanna Westerlund



<b>Eventor Contact, website administration</b>	Jonas Westerlund
<b>Prize-giving ceremony Coordinator</b>	Karin Mårtenson
<b>Quality Consultant (language), Speaker</b>	Clive Allen

## Contact

Event Office: [etoc2022@ok77.fi](mailto:etoc2022@ok77.fi) +358 40 7366947 (Henrika Backman)

Media contact: Anna Jacobson, [anna@ok77.fi](mailto:anna@ok77.fi) +358 45 3474770

Accommodation: [accommodation@ok77.fi](mailto:accommodation@ok77.fi)

Eventor contact: [eventor@ok77.fi](mailto:eventor@ok77.fi)

Volunteering opportunities: [volunteers@ok77.fi](mailto:volunteers@ok77.fi)

Website: [www.etoc2022.com](http://www.etoc2022.com)

Facebook: <https://www.facebook.com/events/1360198091045189>

Instagram: <https://www.instagram.com/etoc2022/>

Twitter: <https://twitter.com/etoc2022>

## Event Advisers

<b>Senior Event Adviser</b>	Jana Kostova (CZE)
<b>National Controller</b>	Jari Turto (FIN)

# Event Programme

Date	Time	Programme	Location
<b>Tuesday 24.5.2022</b>		Arrival	Kisakallio
	14:00–18:00	Event Office open	Kisakallio
<b>Wednesday 25.5.2022</b> <b>Model Event</b>	09:00–19:00	Event Office open	Kisakallio
	10:00–16:00	Model Event	Kisakallio
	12:00	Deadline for name submissions – PreO	IOF Eventor
	18:00–19:00	Team Officials' Meeting	Kisakallio
<b>Thursday 26.5.2022</b> <b>PreO 1</b>	10:00–16:00	PreO 1	Luukki
	08:00–17:30	Event Office open	Luukki
	09:00	Opening Ceremony	Luukki
	10:00	First start	
	11:30	Quarantine for last starters begins	
	18:00–19:00	Team Officials' Meeting	Kisakallio
	18:00–19:00	Event Office open	Kisakallio
<b>Friday 27.5.2022</b> <b>PreO 2</b>	09:00–16:30	PreO 2	Luukki
	08:30–17:00	Event Office open	Luukki
	09:20	First transport to start from Event Centre	Luukki
	10:00	First start	
	12:00	Deadline for name submissions – TempO	IOF Eventor



	18:00–19:00	Event Office open	Kisakallio
	18:00–19:00	Team Officials' Meeting	Kisakallio
	19:00	Prize-giving Ceremony	Kisakallio
<b>Saturday 28.5.2022</b>	08:00–17:00	TempO	Veikkola
<b>TempO</b>	08:00–18:30	Event Office open	Veikkola
	09:00	First start, Qualification	
	09:45	Quarantine closes	
	13:45	Final quarantine closes	
	14:15	First start, Final	
	18:00	Deadline for name submission – Relay	IOF Eventor
	18:00–19:00	Event Office open	Kisakallio
	18:00–19:00	Team Officials' Meeting	Kisakallio
	19:00	Prize-giving Ceremony	Kisakallio
<b>Sunday 29.5.2022</b>	10:00–16:00	Relay	Oittaa
<b>Relay</b>	09:00–17:00	Event Office open	Oittaa
	10:00	Start, P Class	
	10:15	Start, O Class	
	13:30	Maximum time deadline (PreO part)	
	16:00	Prize-giving and Closing Ceremony	Oittaa





## Event Centre and Accommodation

**Kisakallio Sports Institute, Kaarina Karintie 4, 08360 Lohja**

The Event Centre is Kisakallio Sports Institute, located some 7 km north of the nearest town Lohja and 65 km west of Helsinki Airport and Helsinki Harbour. From Turku Harbour it is 115 km to Kisakallio.

From the road E18 (highway Helsinki–Turku), take exit 22, and then Karnaistentie and Kisakalliontie to Kisakallio.



Kisakallio Sports Institute is a non-profit foundation which offers a wide variety of sports, activities and educational opportunities, and has excellent facilities for professional and amateur sports enthusiasts. The Institute was founded in 1949 to be a Gymnastics institute for women of all ages.

Today, Kisakallio Sports Institute is one of the biggest training and education centres in Finland and Europe, with 700 beds and almost 15,000 sq.m. of sport facilities. There are rooms of different standards, well suited to accommodate also athletes using wheelchairs. A restaurant and café are available and they are open daily from morning until evening.

Kisakallio is surrounded by 250 hectares of wild wood, an area called “Karnaistenkorpi” which is, nationally and internationally, environmentally unique. Karnaistenkorpi is owned by the City of Lohja and the nature trails going through the entire area are maintained by Kisakallio Sports Institute. Also the biggest lake in Southern Finland, Lake Lohja, is just in front.



## Participation

Competitors representing member federations of the IOF, defined by the International Paralympic Committee as belonging to the European continent, can compete in ETOC.

Competitors representing other member federations of the IOF can participate in ETOC but will not be eligible for European titles, medals or diplomas.

In the individual PreO event a federation may enter a maximum of 6 persons in each class.

In the TempO event a federation may enter a maximum of 8 persons. The current European Champions may be entered in their respective classes in addition to the normal maximum. In

the TrailO Relay a federation may enter 2 teams in each class, each consisting of 3 competitors. Only the better-placed team will count in the prize list.

## Classes and Competition rules

In the individual PreO competitions and in the TrailO Relay there is an O (Open) class and a P (Physically Challenged) class. In the TempO competition there is a single class (O).

The Competition Rules for IOF Trail Orienteering Events 2022\* and the ETOC Rules valid in 2022 shall apply to the European Trail Orienteering Championships 2022. The rules are available for download on the IOF website <https://orienteering.sport/>. The maps of ETOC 2022 follow the International Standards for Sprint Orienteering (ISSPrOM) 2019.

\*) except for zero tolerance. See: Course information on page 16.







## Entries

### Entry summary

Federation	O Athlete	P Athlete	Team Official	Accompanying Person	Escort	Total
Croatia	3					3
Czech Republic	6	4			1	11
Denmark	5	1			1	7
Estonia	1					1
Finland	9	4	1		4	18
Germany	4					4
Great Britain	7	3	1	1		12
Italy	8	4			1	13
Japan	2					2
Latvia	7	4			2	13
Lithuania	6					6
Norway	6	1	1			8
Poland	6	4			3	13
Slovakia	4					4
Slovenia	3					3
Spain	4	3	1			8
Sweden	11	3	1			15
Ukraine	4	7	1		2	14
Sum	96	38	6	1	14	155

The entry deadline for names of competitors for the individual competitions is at 12:00 on the day before competition. The entry deadline for three names of competitors per Relay team is at 18:00 on the day before competition. All entries have to be made through [IOF Eventor](#).

## Covid-19

Current Covid-19 related information will be published on the [event website](#). ETOC 2022 strongly recommends taking the Covid-19 vaccines available in your country. To enter Finland, please check current information [here](#).

## Team Officials' Meetings

Team Officials' Meetings will be held at Kisakallio Sports Institute at 18:00 each evening before competition (25-28.5). A maximum of two people per federation may take part. Any exceptions shall be approved by the IOF Event Adviser.



## Event Office

The Event Office is open at the following times:

Date	Location	
<b>Tuesday 24.5.2022</b>	Kisakallio	14:00–18:00
<b>Wednesday 25.5.2022</b>	Kisakallio	09:00–19:00
<b>Thursday 26.5.2022</b>	Luukki	08:00–17:30
	Kisakallio	18:00–19:00
<b>Friday 27.5.2022</b>	Luukki	08:30–17:00
	Kisakallio	18:00–19:00
<b>Saturday 28.5.2022</b>	Veikkola	08:00–18:30
	Kisakallio	18:00–19:00
<b>Sunday 29.5.2022</b>	Oittaa	09:00–17:00

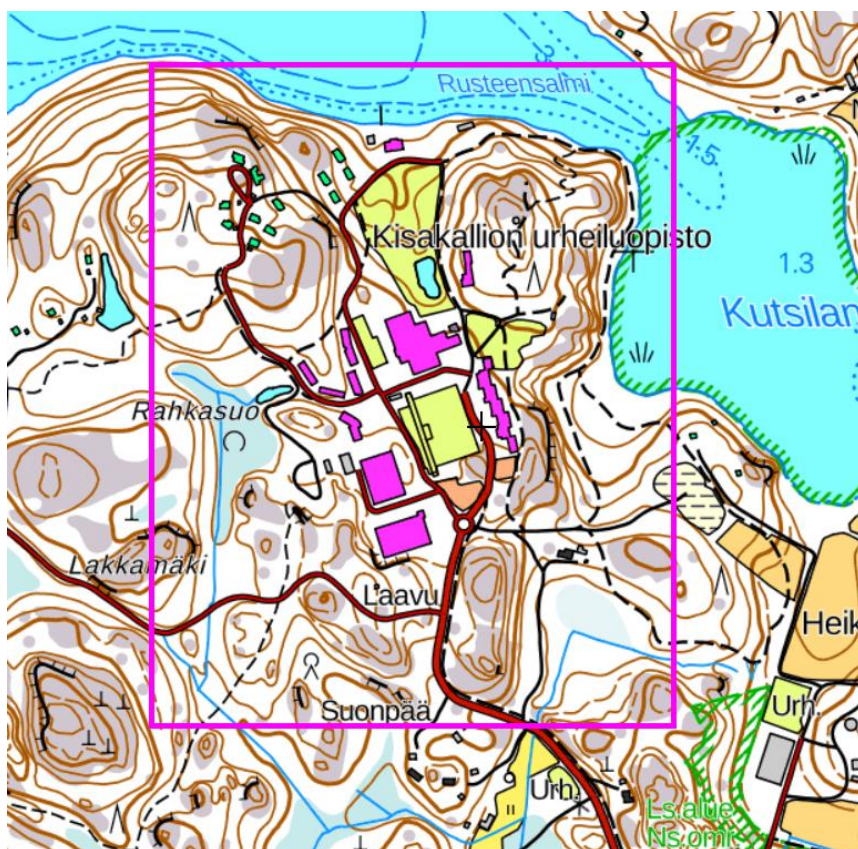
## Embargoed areas

All potential ETOC 2022 participants, coaches, and team officials, as well all those people who could supply ETOC team members with information about the terrain, are prohibited to enter the embargoed areas. It is furthermore forbidden to fly drones above the embargoed areas. The detailed embargoed areas can be seen in [the map register of the Finnish Orienteering Federation](#) (“Harjoituskiellot”=Embargoed areas)

### 1) Kisakallio Sports Institute, Lohja.

On Wednesday 25 May 2022 it is not allowed to leave the tracks and roads in Kisakallio area (below) except when asked to do so by the organiser. For the rest of the time, there is no longer any embargoed area in Kisakallio.



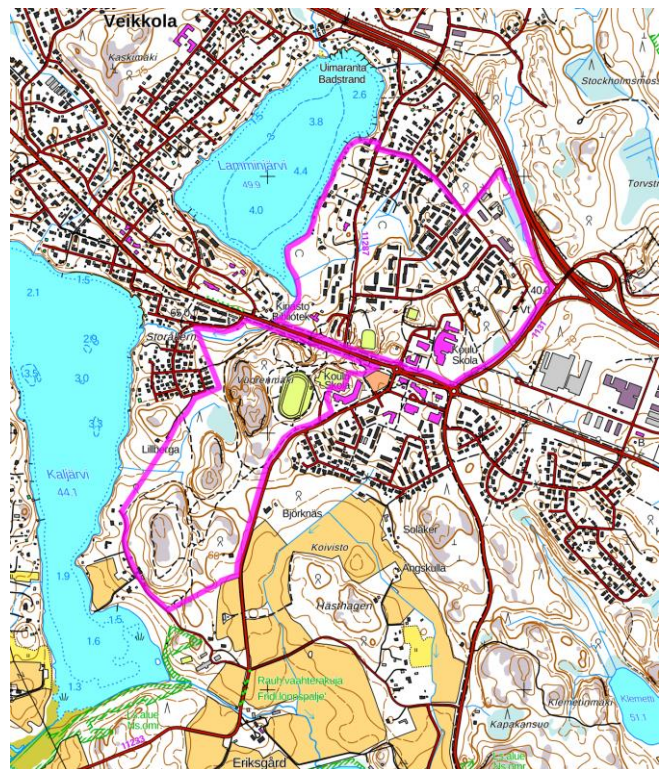
[illegible]





### 3) Veikkola, Kirkkonummi

Bigger roads to and from the Event Centre are not under embargo to make it more comfortable for the participants. The organisers ask for fair behaviour and sporting spirit when moving on the roads. They are not meant for gathering intelligence but for arriving to the event.



### 3) Oittaa, Espoo

On Sunday 29 May 2022, the participants and the public are allowed to enter those areas of the embargoed area that are marked in the terrain as allowed by the organiser.





## Mapping

The maps have been drawn by Matti Toivonen and modified by the course planners. The maps of ETOC 2022 follow the International Standards for Sprint Orienteering (ISSprOM) 2019. However, the maps have been made in 2018–2019 and therefore the minimum height of the mapped boulders, knolls and rock faces is 1 metre. Please note that the round end of the new rock faces is not counted into the length of the rock face. All maps are in A4 format and in a plastic bag. The map scale is 1:4 000 and contour interval 2 m.



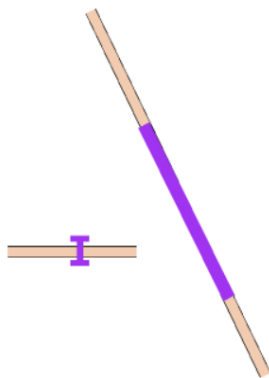
*Old rock faces.*



*New rock faces.*

## One-ways

There are some one-way sections and one-way gates in PreO 1 and Relay. They are marked on the map and in the terrain. It is allowed to stop on a one-way, but not go back. Once you have gone through a one-way gate, you cannot go back. The one-way procedures will be monitored by marshals, and violations can lead to disqualification.



*One-way gate and one-way section*



## Course information

Event	Length	Controls	Timed control	Road surface	Climb	Max time
<b>Model, TempO</b>	0.5 km		3 x 5 tasks	Asphalt and gravel		
<b>Model, PreO</b>	0.9 km	14	1 x 3 tasks	Asphalt and gravel	15 m	O: 1 h 8 min P: 1 h 13 min
<b>PreO 1</b>	1.3 km	25	2 x 3 tasks	Smooth gravel	25 m	O: 1 h 54 min P: 2 h 2 min
<b>PreO 2</b>	1.6 km	28	2 x 3 tasks	Smooth to rough gravel	35 m	O: 2 h 12 min P: 2 h 22 min
<b>TempO Qual.</b>	1.9 km	-	6 x 5 tasks	Mixed (asphalt/smooth gravel/forest track)	25 m	
<b>TempO Final</b>	1.6 km	-	7 x 5 tasks	Mixed (smooth gravel/forest track)	15 m	
<b>Relay</b>	0.9 km	3x13	2/leg x 5 tasks	Smooth gravel	30 m	O: 3 h 15 min P: 3 h 30 min

**All our zeros can be solved with map-reading and control descriptions.**

When the answer is zero, there are no flags **on the same** areal or linear feature closer than 4 metres from the right place. For point features, there are no zeros closer than 135 degrees from the right direction. Please note that the zero tolerance guidance from the IOF changed after the courses were set, controlled and approved. The courses have not been modified after that.





# Model, Wednesday 25 May 2022

Event Centre: Kisakallio Sports Institute

Address: Kaarina Karin tie 4, 08360 LOHJA

Start: 10:00

## **Distances:**

Parking – Start: 0 – 250 m

Event Centre – TempO start 300 m

TempO – PreO start 300 m

Finish – Event Centre 300 m

The Model event contains both the TempO and the PreO models. Competitors start according to the start list which will be published at [www.etoc2022.com](http://www.etoc2022.com). The start interval is 2 min and competitors (and team officials) from one country are starting after each other.

## **Approximate timing of the starts:**

10:00–11:00 CZE, DEN, GBR

11:00–12:00 ESP, ITA, POL

12:00–13:00 NOR, SLO, SVK, SWE

13:00–14:00 EST, FIN, GER

14:00–15:00 CRO, JPN, LAT, LTU,

15:00–16:00 UKR

The Model Event is organised at Kisakallio Sports Institute. The terrain is pine/spruce forest with mostly good visibility. The Event Office is located in the Sports Institute's main building (reception area). Team envelopes should be picked up from the Event Office prior to starting. The envelope contains among other items the SPORTident cards and the bib numbers for Model. The competitor's TempO back-up card and a back-up pin punching card for PreO are also in the team envelope.

Competitors start with the TempO model followed immediately by the PreO model. After the PreO finish there is a timed control.



The first TempO station is a model station reflecting the set-up at the TempO Qualification event. The station contains two viewing stations (tents) marked Heat A and Heat B. During the Model Event only the tent marked Heat B is manned. Heat A tent can be used independently. At the second and third TempO station there is only one tent reflecting the set-up of the TempO Final. There are additional sets of maps available next to the tents for those wanting to check afterwards. Please speak loudly and clearly when giving your answers. Please do not stay longer in the (manned) tent after answering and receiving back your card. Please check your answers on the card before leaving the station. After you have left the station, no answers can be changed on the card.

There is an uphill route between the TempO and the PreO model. The organiser will provide assistance on the hill for wheelchairs.

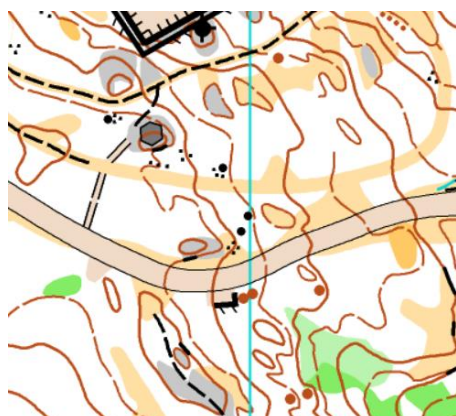
**The PreO model** has 14 controls and the course length is 860 m. The course follows asphalt and gravel roads. There are no steeper sections, and the total climb is 15 m. The maximum time is 68 min. (P class 73 min.).

Directly after the PreO finish there is a SPORTident Read-out Station.

The timed control is located directly after the SPORTident Read-out Station. The timed control has two tents, one marked O (for Open class) and the other P (for P class). Both stations are used during the model event and either of the stations can be used during the model by both O class and P class competitors (to avoid over-long waiting). The set-up (the tents and the marking) is to reflect the set-up during PreO 1 and 2.

The timed control has 6 flags and 3 tasks.

Toilets are available at the Kisakallio Sports Institute.



Previous map:

[http://vaajakoskentera.com/kartat/show\\_map.php?user=ToniS&map=202&lang=nb](http://vaajakoskentera.com/kartat/show_map.php?user=ToniS&map=202&lang=nb)

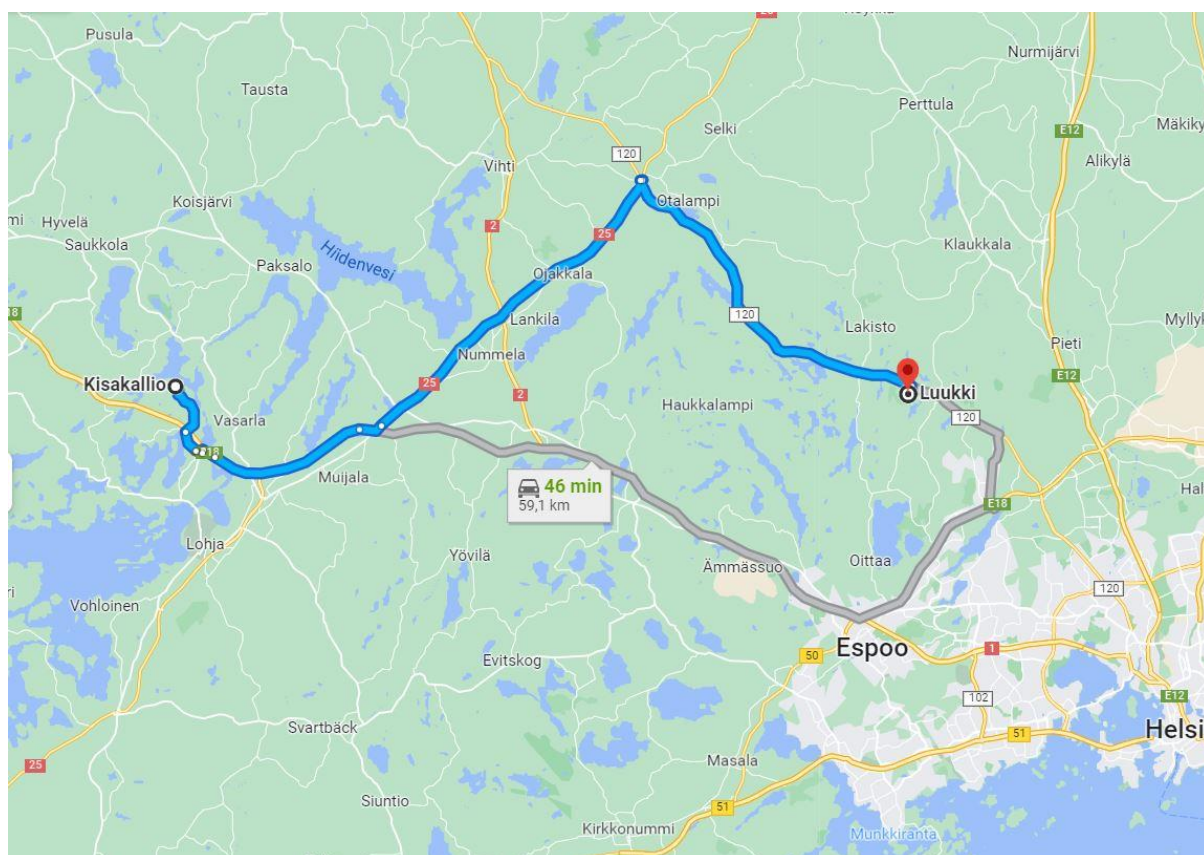
[http://www.kartta-arkisto.net/show\\_map.php?user=SamiH&map=168](http://www.kartta-arkisto.net/show_map.php?user=SamiH&map=168)



# PreO 1, Thursday 26 May 2022

Event Centre: Luukki

Address: Luukintie 33, 02970 Espoo



First start: 10:00

## Distances:

Parking – Event Centre 100 m

Event Centre - Start 450 m

Finish – Event Centre 500 m

PreO 1 is organised in Luukki, Espoo. The terrain is a typical Finnish forest with a mixture of spruce and pine trees. In parts, there are bare rock/cliff areas. The visibility is medium to good.

The only approach to the Event Centre at Luukki is from road 120 (Vihdintie), as shown on the map, with two different route options from Kisakallio. The road from Röylä/Snettans directly to Luukki (Luukintie, not shown on the map) is forbidden as it goes through the





embargoed area. When leaving the event after the competition is over, this road may be used.

The ETOC parking area (follow ETOC signs) is free of charge. Participants are free to use the main parking area (asphalted) close to the Event Centre. However, please note that a parking fee has to be paid and the payment can only be made by card.

The first start is at 10:00. The start intervals are 1½ min in the Open Class and 3 min in the P Class. In the area before the Start there is a toilet and a pre-start quarantine tent. All competitors must have reached the pre-start quarantine by 11.30.

The PreO 1 course is 1.3 km with 25 controls. The course follows very good gravel tracks. The total climb is 25 m with one steeper climb. Officials will be placed at this section to support wheelchair users. On the course there is a One-Way Gate. After having passed the gate, competitors are not allowed to go back through the gate. Officials will be placed at the gate to check adherence. Controls must be solved in number-order.

The maximum times are 1 hour 54 min (Open Class) and 2 hours 2 min (P Class).

There are 2 timed controls after the Finish, with 6 flags and 3 tasks each.

After the timed controls, there follows a SPORTident Read-out Station where the pin data is registered. At the Read-out Station there is a Post-Course Quarantine tent. Competitors completing the course and the timed controls and arriving at the Read-out Station before 11:30 have to stay in the tent until the quarantine closes (11:30).



Previous map: <https://reitti.helsinginsuunnistajat.fi/cgi-bin/reitti.cgi?act=map&id=244#>





## PreO 2, Friday 27 May 2022

Event Centre: Luukki

Address: Luukintie 33, 02970 Espoo

First start: 10:00

The Event Centre for PreO 2 is the same as for PreO 1. The terrain is a pine/spruce area typical of the famous Noux National Park. Mostly hilly terrain with hill slopes/tops with good visibility. Predominant features are bare rock areas and hillsides with lots of rock faces.

Parking is organised in the same way as in PreO 1. For PreO 2 there are no restrictions on routes to and from the event.

Competitors will be transported by car from the Event Centre to the Start and from the Finish back to the Event Centre. The official transport is compulsory. There are no possibilities to use own transport to the Start or from the Finish. Transportation is made by ordinary cars (3-4 passengers per car) and a special car equipped to transport competitors using a wheelchair. The transport pick-up station at the Event Centre is on the eastern-most part of the asphalted parking area. The distance from the Event Centre to the transport pick-up area is 100 m.

### **The transportation is according to the following schedule:**

Departure time from Event Centre	Competitors with start times between
9:20	10:00–10:28
9:50	10:29–10:57
10:20	10:58 – 11:26
10:50	11:27 – 11:55
11:20	11:56 – 12:24
11:50	12:25 –

Transportation back to the Event Centre from the pick-up area after the Finish leaves as soon as a car is filled up.

The first start is at 10:00. The start interval in the Open class is 2 min. and in the P class 4 min.



The first timed control is located before the PreO course Start and the second timed control just after the PreO course Finish. The start area is organised as follows: before the first timed control there is a Pre-Start. A competitor's start time indicates when the competitor shall be at the Pre-Start and ready for the first timed control. Since the time at the timed control will vary from one competitor to another, there may be a build-up of a queue before the control. When there is a queue the first competitor in the queue is taken to the control immediately when the control is vacant. If there is no queue, competitors are taken to the control at their ordinary start time. After the timed control competitors go directly to the start of the PreO (distance ca. 30 m). Once at the Start they start immediately by first clearing and then starting their SI unit. Once done they receive the map and start the competition.

The PreO course is 1.6 km with 28 controls on a smooth to rough gravel road. The climb is 35 m with some steeper parts. Officials are available in the steeper parts to assist competitors using manual wheelchairs. The maximum times are 2 hours 12 min. (Open class) and 2 hours 22 min (P class). Controls must be solved in number-order.

At the end of the course a wooden platform has been built at the side of the road. A wooden walkway leads from the gravel road up to the platform where there are a number of viewing points located. The SI units for these controls are located on the platform. The wooden walkway is quite narrow. Halfway between the gravel road and the platform there is a wider section where two wheelchairs can pass. The purpose of the walkway is only to link the road with the platform. It is forbidden to use it as a viewing spot (forbidden to stop both coming in and going out). A narrow corridor along and beside the wooden walkway has been marked in the terrain and can be used by competitors who can walk without problems. The same restriction is valid for this corridor as with the walkway (no stopping). Outside the platform there is a distinct flatter area without a wooden floor. This area can be used by competitors. The boundaries of the area are clearly marked in the terrain.

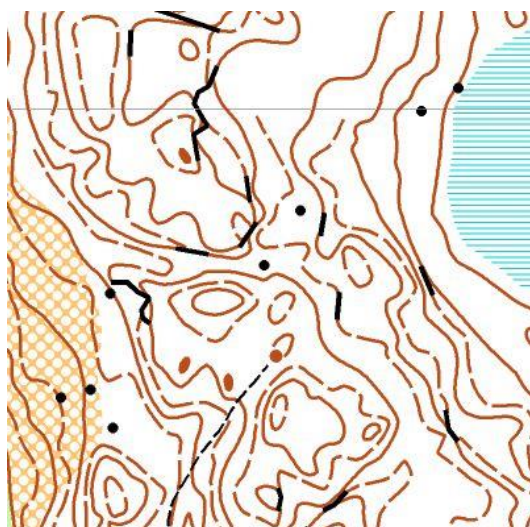
Should the platform become full (planned to hold 30 competitors at the same time), incoming competitors will be placed in a waiting area on the gravel road. The time in waiting will be recorded and afterwards subtracted from the total time used.

After the Finish follows directly the second timed control which in turn is followed by the SI Read-out Station. Both timed controls have 6 flags and 3 tasks. At each control there are two stations: one station marked "O" for Open class competitors and one station marked "P" for P class competitors.

The distance from the SI Read-out Station to the transportation pick-up area is ca. 200 m.



There is a toilet located at the drop-off area before the Start and another toilet and a drinking station (water) on the course. The two latter are marked on the map.

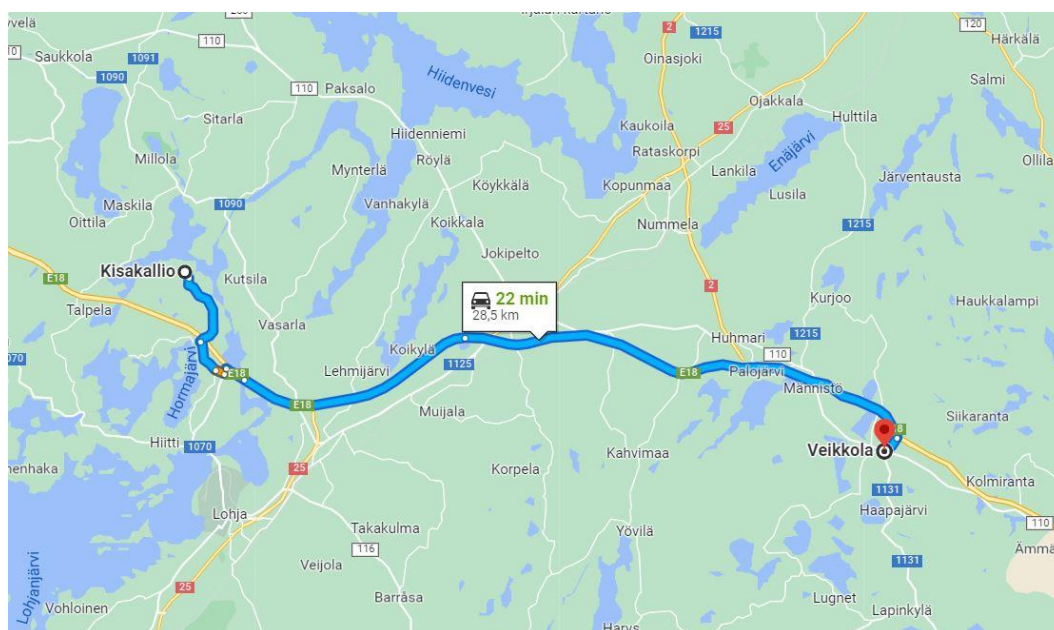


Previous map: <https://reitti.helsinginsuunnistajat.fi/cgi-bin/reitti.cgi?act=map&id=244#>

## TempO, Saturday 28 May 2022

Event Centre: Community Centre in village Veikkola

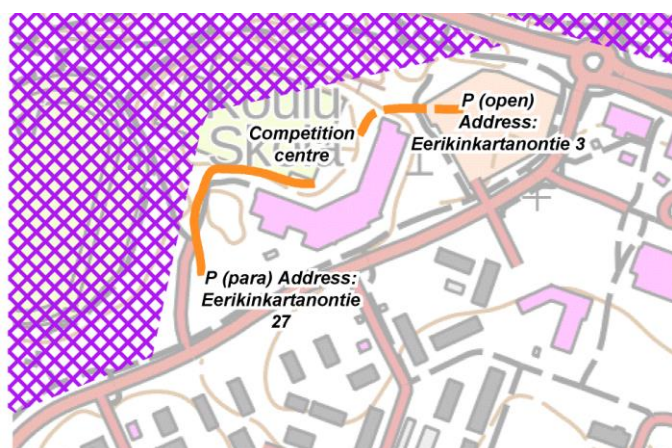
Address: Eerikinkartanontie 5, 02880 Veikkola







## Parking:



Accessible way from parking to competition centre by wheelchair



The way from parking to the competition centre using stairs



Embargoed area



First start TempO Qualification: 9:00

## Distances:

Parking - Event Centre: 100 m

Parking wheelchair users - Event Centre: 150 m

Quarantine - qualification start: 50 m

Finish - Event Centre: 800 m

Quarantine is situated inside the school building at the Event Centre. Quarantine closes at 9:45. The competitors are asked to behave in a fair manner and move on the roads only as much as is needed to arrive to the Event Centre in the morning. Toilets are available in quarantine and in the Event Centre.

The course has a length of 1900 metres (climb 25 m). The road surface includes asphalt, smooth gravel, and forest track. There are six timed stations, each with 5 tasks and 6 flags. The time limit for the timed station is 150 seconds. The penalty for each incorrect answer is 30 seconds. The timed controls can contain zero answers.

There are two tents at each station, for Heat A and Heat B. The competitors with red number bibs go to the A tents. The competitors with green number bibs go to the B tents.

Marking of course: The course will be marked with orange flags and directional arrows.

Waiting points are marked with "Stop" signs. Marking of the route must be followed carefully





(an example: if the marking is on the left side of the road, it is mandatory to stay also on the left side). After the last station, the competitors will get a map, where the route back to the Event Centre is marked.

The competitors placed number 18 and better in each qualification race heat compete in the final. If some non-European competitors are among them, they can compete in the final, and the number of competitors in the final will be increased so that the best 18 European competitors from each heat compete in the final.

First start TempO Final: 14:15

Quarantine before the start, competitors shall be present in quarantine by 13:45. Quarantine is situated inside the school building at the Event Centre. Toilets are available in quarantine and in the Event Centre.

Quarantine - Final start: 50 m

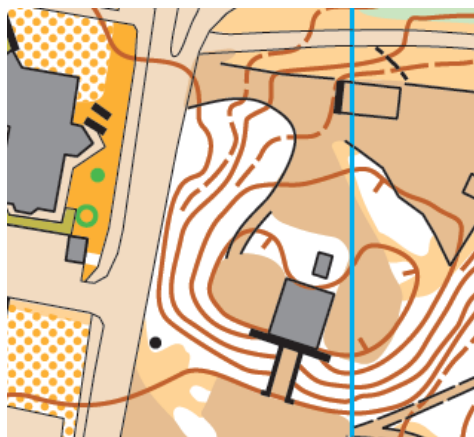
Finish - Event Centre: 400-500 m

The course has a length of 1600 metres (climb 15 m). Road surface includes asphalt, smooth gravel and forest track. There are seven timed stations, each with 5 tasks and 6 flags. The time limit for the timed station is 150 seconds. The penalty for each incorrect answer is 30 seconds. The timed controls can contain zero answers.

Marking of course: Will be marked by continuous white ribbon. Waiting points are marked with "Stop" signs and you should be waiting exactly behind it until an official is calling.

Marking of the route should be followed strictly and carefully (an example: if the marking is on the left side of the road, it is mandatory to also stay on the left side).

The terrain is a suburban area with a mixture of open, park-like areas and forest islands among official buildings and living quarters.



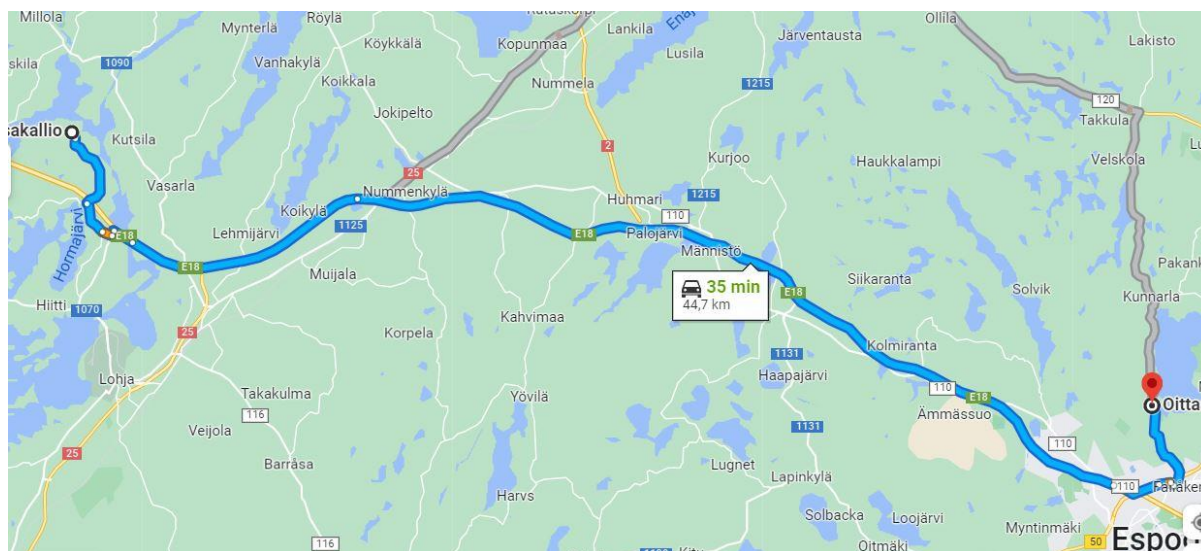
Previous map: <https://etoc2022.com/om/terrains-and-previous-maps/>



# Relay, Sunday 29 May 2022

**Event Centre: Oittaa Recreational Centre**

**Address: Oittaantie 1, 02740 Espoo**



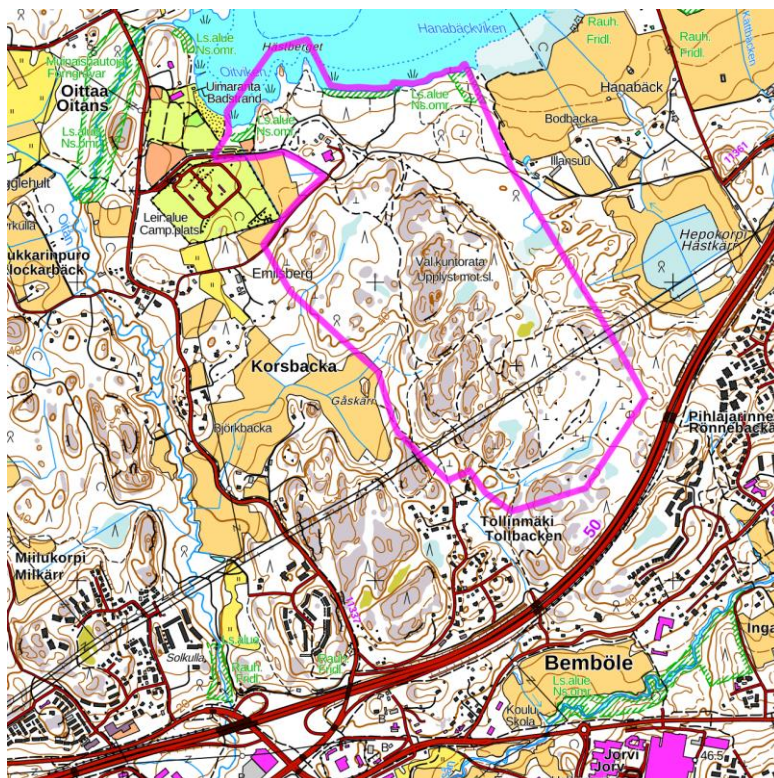
First start: 10:00 (P), 10:15 (O)

The Relay Event is organised at Oittaa Recreational Area. The terrain is a typical Finnish forest with a mixture of spruce and pine trees. In parts, there are bare rock/cliff areas. Visibility is medium to good.

The area's entire main parking area can be used for parking, including the parking area near the restaurant. The routes from the parking areas to the Event Centre are sign-posted (distances from 100 to 600 m).

The map below shows which areas around the Event Centre are embargoed. On Sunday 29 May 2022, the participants are allowed to enter those areas of the embargoed area that are marked in the terrain as allowed by the organiser. The café/restaurant on the area is open from 10 to 16 and can be visited at any time during the competition.





The Start and Change-over site is situated 600 m from the Event Centre. Note that there is a very steep section on the route from the Event Centre to the Start. Allow enough time to cover the distance – suggested 15 min.! After 100 metres, on the way to the Start/Change-over, there is a One-way Gate. After having passed the gate, competitors are not allowed to go back through the gate.

*Originally, the Relay was planned to be held in another terrain. Due to the postponement of the events, the terrain became unusable. The Relay had to be moved, but in the reserve areas there was no possibility to have a round PreO course (without having too-steep hills on the course). Therefore, to ensure fairness to all competitors, the relay set-up has to be different than usual.*

The event is organised in the following way:

The PreO part consists of three different courses, each one in a team having one of these courses to solve. To avoid congestion, the first 4 controls on a course can be taken in free order, thereafter in numerical order. Along the course there are two one-way sections. They are clearly marked on the ground as well as on the map. The start of the P class is at 10:00 and the start of the Open class is at 10:15. The maximum time for the entire team is (Open class) 3 hours 15 min and (P class) 3 hours 30 min. This means that the maximum time deadline is at 13:30 for both classes. Teams arriving later get a penalty.





For all members of a team, the Start/Change-over and the Finish of the PreO part are in two different locations, out of sight from each other. Therefore there will be radio links set up and at the Change-over there will be two announcements of competitor numbers by loud-speaker:

(1) when a competitor on the course passes a Pre-Warning location, approximately 6-10 minutes before reaching the Finish. The competitor number will also be written on a whiteboard. At this point, the outgoing team member enters the Change-over area, clears the SI pin and punches the start box. (SPORTident is used only for punching in the Relay, not for timekeeping.)

(2) when the competitor on the course passes the Finish line. At this point the waiting competitor goes to the map area, takes a map and starts.

After the PreO finish follows an SI Read-out Station. From there the competitor follows a signed route to the start of the TempO area (distance approximately 800 m). There are in total six TempO stations. Each competitor in a team has to solve tasks at two of these stations. Which stations to visit are shown on the number bib (having either a Blue, Red, or Green colour marking). A competitor having for example a Blue marking goes first to the station marked Blue 1 and follows after that signs to the second blue station (Blue 2). After finishing the second TempO station competitors follow signs to the Event Centre.

For competitors on the first leg there is a Post-Course Quarantine area where incoming competitors may have to wait until the last outgoing competitors have left the Event Centre. At the quarantine there are toilets and drinking water. As soon as all competitors have left the Event Centre the quarantine is over.



Previous map: <http://www.ok77.fi/routegadget/rq2/#11>



## Punching system and results

In PreO competitions and in the Relay, SPORTident is used. The organiser provides SPORTident cards for the athletes, who shall return them to the Event Office after the last competition. The fee for a lost or broken SPORTident card is 40 €. It is obligatory to use the card provided by the organiser, and it is the competitor's own responsibility to use the card with the number shown in the start list. Competitors will also receive a back-up paper card, which shall be used if SPORTident does not work. There are pin punches at all controls. The paper card is not water resistant.

In TempO, Relay and timed controls, ANT is used to record the answers. The competitors carry with them competition cards, which are water resistant, and the answers are written on those too. In case of conflicting answers in ANT and on the card, the answer on the card applies. However if the card has been modified by the athlete, the ANT answer will be used.

All results will be published at [preoresultat.se](http://preoresultat.se) and later on IOF Eventor.

## Start number bibs

Start number bibs shall be clearly visible from the front and worn on the chest or leg. Cutting, folding, or other adjustment of the start numbers is not allowed. Start number bibs for the Model, and safety pins for the whole event, will be distributed in envelopes for each team at the registration office. Start number bibs for each competition will be distributed in conjunction with the relevant Team Officials' Meeting.

## Procedure at timed controls and in Tempo

When the competitor is given a set of maps, the competitor must verify that the order of the maps is correct by seeing all the numbers on the right-hand side. If you see a crossed check box instead of a number, immediately inform the marshal about this, and wait while the problem is resolved.

When answering, please speak loud and clear using the letters Alfa, Bravo, Charlie, Delta, Echo, Foxtrot, and Zero (only in TempO), or point the answers on the letters in front of the



competitor's chair. If the officials' do not hear your answer, they ask "Sorry?", and you need to repeat it. Please be prepared to answer immediately (do not delay by preparing glasses, magnifier, compass, etc.). Competitors are not allowed to slow the process by saying they cannot see one of the flags while the flags are presented. The official can help you by showing them again as soon as timekeeping has started ("time starts NOW").

When you receive back your control card, check the answers immediately. After leaving the stations, you cannot argue against the letters on the card.

## Equipment

During the competition the navigational aids that competitors may use are only the map and control descriptions provided by the organiser, and a compass. No mechanical or electronic aids, other than an odometer and a watch are allowed. A magnifying glass, either incorporated in the compass or separate, is allowed. Binoculars and telescopes are prohibited. Telecommunication equipment may not be used in the competition area, except in an emergency by marshals. Any other use of telecommunication equipment during the competition period may result in disqualification of the competitor and team. It is permitted to use telecommunication or any electronic equipment during the Model.

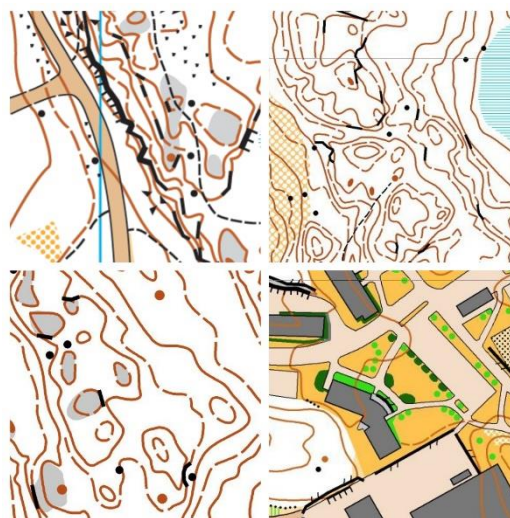






## Solution maps

Solution maps will be available in the Event Office after the competition is over. The solution maps are in envelopes for each team, and the Team Manager should pick them up, and sign on the list in the Event Office that they have got the maps.



## Complaints and Protests

Complaints may only be made by team officials or competitors. Any complaint shall be made in writing to the organiser (Event Office) as soon as possible, but no later than 30 minutes after the solution sheets have been distributed. The start of the last 30-minute period will be announced. The complainant shall be informed about the decision immediately. There is no fee for a complaint. A protest may be made against the organiser's decision about a complaint. Protests may only be made by team officials or competitors. Any protest shall be made in writing to the organiser no later than 15 minutes after the organiser has informed the complainant of the decision about the complaint. Protests received after this time limit may be considered at the discretion of the jury if there are valid exceptional circumstances, which must be explained in the protest. The Organiser will accept extra time (15 minutes) for protest writing if it was requested during the official first 15 minutes. A protest fee of 50 EUR shall be paid to the IOF Senior Event Adviser in cash when making a protest. The fee will be returned if the protest is accepted by the jury, otherwise the fee shall be sent to the IOF. Where a protest is signed by more than one Federation, each of these Federations will pay the protest fee.

Jury: Owe Fredholm (Chair) SWE, Per Stålnacke NOR, JP Valente ESP



## Climate

The average daily temperature in May is around 10°C. High temperatures average about 15–20°C while lows still drop down to 4°C.

Still a low month for rainfall, May typically sees about 40 mm of rain throughout the month, with an average of 14 possible rainy days. The skies begin to clear overall, and there is a 40 per cent chance of a mostly sunny day throughout the month.

## Travel and transport

Teams, VIPs and media representatives are free to use their own transport to all the events. There will be reserved parking areas at all the arenas. In PreO 2, compulsory transportation to start and from finish will be provided for all athletes.

## Catering

Pre-ordered warm meals will be provided for lunch in the Event Centres of PreO 1 and PreO 2. Tickets for meals will be given to the teams on arrival. Near the TempO Event Centre there are a couple of restaurants and a grocery store S-Market. The competitors will receive after qualification a map where these are marked. At the Relay there is a lunch restaurant close by. Dinners at Kisakallio must be pre-booked directly with Kisakallio.

## Photos and videos

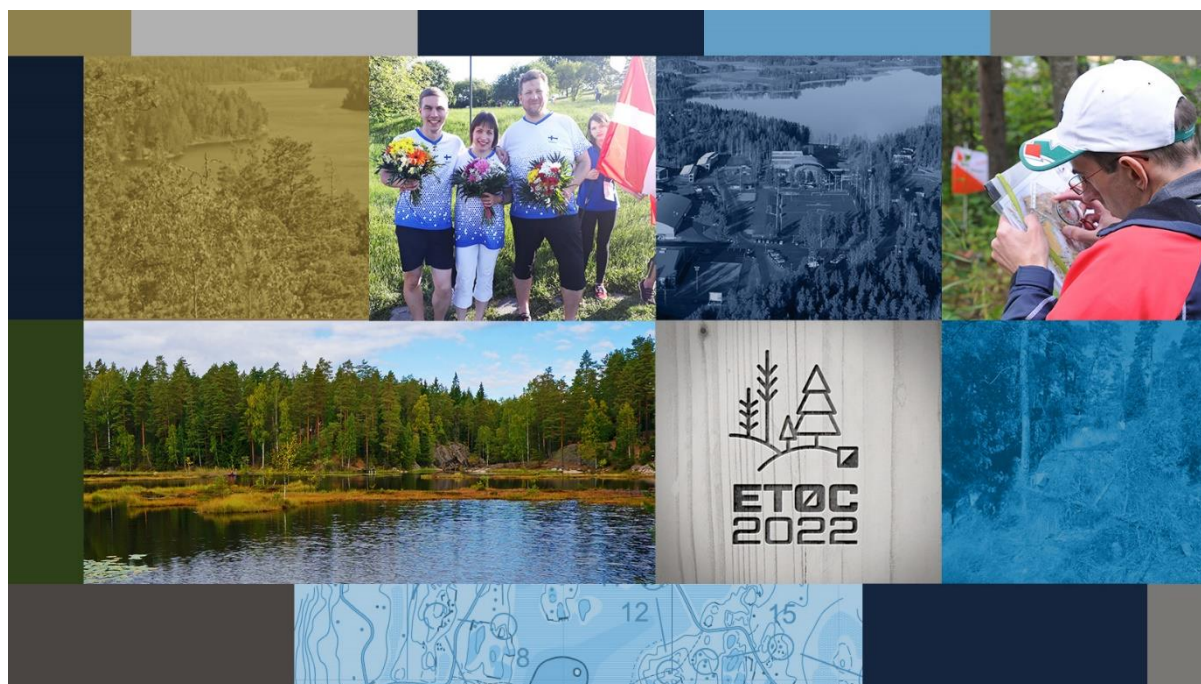
There will be officials taking photographs and videos of the competitions in the terrain, in the Event Centres and at prize-givings.



## Public events

There will be an opportunity for the public to go out on the competition courses after the ETOC competitions are over. Entries to the public competitions can be made via email to [etoc2022@ok77.fi](mailto:etoc2022@ok77.fi) or at the Event Office. The fee for the individual events is 15 EUR/event and for the Relay 8 EUR/person. At the Event Office you can pay cash or with card.

Date	Event	Preliminary start times	Location
Thursday 26.5.2022	PreO 1, Public race	14:00–14:40	Luukki
Friday 27.5.2022	PreO 2, Public race	14:00–15:00	Luukki
Saturday 28.5.2022	TempO, Public event	Q 11:30–12:00 F 16:45–17:15	Veikkola
Sunday 29.5.2022	Relay, Public event	13:30	Oittaa







## Ceremonies

The Opening Ceremony will be held on Thursday 26 May 2022 at 09:00 in Luukki, at the Event Centre of PreO 1 and 2. All medal ceremonies, with the exception of the Relay, will be held at Kisakallio Sports Institute. The PreO prize-giving will be held on Friday 27 May at 19:00, the TempO prize-giving will be held on Saturday 28 May at 19:00 and the Relay prize-giving and Closing Ceremony on Sunday 29 May when the competition is over, at approximately 16:00 in Oittaa.

## Organisers



*Suomen Suunnistusliitto*



**OK 77**

## Sponsors



**SPORTident**